

KATE Executive Board

- **President**
Byoung-Man Jeon (Chonbuk Nat'l U.)
- **Vice Presidents**
 - Journal Editing & Publication Jun-Eon Park (Soongsil U.)
 - Planning & Coordination Junil Oh (Pukyong Nat'l U.)
 - Research & Development Byung-kyoo Ahn (Chonnam Nat'l U.)
 - Public Relations Sung-Hee Lee (Chongshin U.)
- **Secretary General**
Young-Tae Kim (Jeonju Nat'l U. of Education)
- **Treasurer**
Jong-hwa Lee (Jeonju Nat'l U. of Education)
- **International Affairs Officers**
Rosa Jinyoung Shim (Open Cyber U.)
Hikyung Lee (Korea U.)
- **Public Relations Officers**
Hyunoo Lee (Inha U.)
Jeong-ryeol Kim (Korea Nat'l U. of Education)
Kee-Ho Kim (Korea U.)
- **Research & Development Officers**
Mi-Jeong Song (Seoul Nat'l U.)
Hee-Jeong Ihm (Seoul Nat'l U. of Education)
Jay Myoung Yu (Yonsei U.)
Shin-hye Kim (Keimyung U.)
Sangjae Kim (Ministry of Education & HRD)
- **Information Officers**
Sangki Cho (Baekseok U.)
Jintae Chang (Hanyang Cyber U.)
- **Editors**
Dongchul Son (Dankook U.)
Youngsook Kim (Chongshin U.)
Kyung-ae Jin (Korea Institute of Curriculum & Evaluation)
Deok-Gi Min (Cheongju Nat'l U. of Education)
Hyun-Sook Chung (Int'l Graduate School of English)
Kyu Soo Sun (Gwangju Nat'l U. of Education)
Kyungsook Paik (Hanyang Women's Col.)
Seongwon Lee (Gyeongsang Nat'l U.)
Jaekun Lee (Korea Nat'l U. of Education)
Chongwon Park (Cheonan U.)
Yong-Yae Park (Seoul Nat'l U.)
Soyoung Lee (Inha U.)
Jihyeon Jeon (Ewha Womans U.)
Dong-Ho Kang (Seoul Nat'l U. of Technology)
Thomas F. Jernstad (Soongsil U.)
- **Auditors**
Dongil Shin (Chung-Ang U.)
Sang-Ho Han (Kyeongju U.)

KATE 2006 International Conference Committee

- **Conference Chair**
Byung-kyoo Ahn (Chonnam Nat'l U.)
- **Program Chair**
Jay Myoung Yu (Yonsei U.)
- **Proceedings Chairs**
Jihyeon Jeon (Ewha Womans U.)
Jun-Eon Park (Soongsil U.)
Chongwon Park (Cheonan U.)
- **International Affairs Chairs**
Rosa Jinyoung Shim (Open Cyber U.)
Hikyung Lee (Korea U.)
- **Publicity Chair & AM Coordinator**
Young-Tae Kim (Jeonju Nat'l U. of Education)
- **Exhibition and Display Chairs**
Sung-Hee Lee (Chongshin U.)
Jeong-ryeol Kim (Korea Nat'l U. of Education)
- **Online Registration and Accommodations Chair**
Jintae Chang (Hanyang Cyber U.)
- **Panel Discussion Chair**
Hyunoo Lee (Inha U.)
- **Event Chair**
Sung-yeon Kim (Hanyang U.)
- **Technical Assistance Chair**
Shinwoong Lee (Hanyang U.)
- **Fund-raising Chair & Treasurer**
Jong-hwa Lee (Jeonju Nat'l U. of Education)

The Korea Association of Teachers of English 2006 International Conference

Beyond the Horizon: Extending the Paradigm of TEFL

June 23 (Friday) - 24 (Saturday), 2006
HIT Bldg., Hanyang University (Seoul, Korea)



The conference was sponsored by:
Korea Research Foundation
International Communication Foundation
British Council Korea
Daekyo
English Mou Mou
Neungyule Education
Korea Tourism Organization

Main Sessions

Paper Sessions

www.kate.or.kr

Day1 • Friday, June 23, 2006

[Room 612]

Time	Event
09:30-09:55	Opening Ceremony
	Opening Address: Byung-kyoo Ahn (Conference Chair) Welcoming Address: Byoung-man Jeon (President, KATE) Congratulatory Speech: Chong Yang Kim (President, Hanyang U.)
	Moderator: Young-Tae Kim (Jeonju Nat'l U. of Education)
10:00-10:40	Keynote Address
	Charles Alderson (Lancaster U., UK) Diagnosing foreign language proficiency: A neglected science?
	Moderator: Junil Oh (Pukyong Nat'l U.)
16:40-17:30	Plenary Speech
	Yon Hee Choi (Ewha Womans U., Korea) Impact of politico-economic situations on English language education in Korea
	Moderator: Gi-Pyo Park (Sunchunhyang U.)
17:30-17:50	Cultural Event
	Moderator: Sung-Hee Lee (Chongshin U.)
17:50-18:40	Reception (sponsored by Hanyang University)

Day2 • Saturday, June 24, 2006

[Room 612]

Time	Event
10:50-11:40	Plenary Speech
	Michael McCarthy (U. of Nottingham, UK) Spoken corpora and language teaching
	Moderator: Hikyoung Lee (Korea U.)
11:40-12:00	General Meeting
	Moderator: Young-Tae Kim (Jeonju Nat'l U. of Education)
13:00-13:50	Plenary Speech
	William Littlewood (Hong Kong Institute of Education, Hong Kong) Task-based instruction: Some practical and conceptual issues
	Moderator: Seikyung Cho (Kyung Hee U.)
15:50-17:00	Panel Discussion
	Moderator: Hyunoo Lee (Inha U.)

Day1 • Section 1: Acquisition

[Room 606]

Chair: Jaekeun Lee (Korea Nat'l U. of Education)	
10:50-11:20	Eunsil Lee (Virginia Tech., USA) Social and cultural interactions outside the classroom: Korean study abroad students' experience
11:20-11:50	Jiae Lee (Int'l Graduate School of English, Korea) Patterns of corrective feedback and learner uptake in English immersion classrooms at primary level
Chair: Young Shik Lee (Hannam U.)	
13:00-13:30	Tae Eun Kim (EEI International, Korea) The role of graphic organizer on elementary and middle school students' summary writing
13:30-14:00	Given Lee (U. of Texas, USA) A case study of six Korean graduate students' participation in class discussion
14:00-14:30	Seong Yeon Jeong (Int'l Graduate School of English, Korea) Facilitating vocabulary learning with pictures
14:30-15:00	Ki Yeon Nam (Int'l Graduate School of English, Korea) Phonemic awareness through modified phonics training to EFL Korean adult learners
Chair: Jin-ock Hong (Inje U.)	
15:20-15:50	JinKyu Saem Park (Indiana U., USA) Native-speaker input is not the key to success in SLA
15:50-16:20	Jinok Kim (Int'l Graduate School of English, Korea) The effects of picture dialogue journal writing on EFL beginning writers

Day2 • Section 1: Acquisition

[Room 606]

Chair: Kyung-suk Kim (Kyonggi U.)	
09:00-09:30	Young Hee Sheen (U. of Nottingham, UK) The effect of focused written corrective feedback on the acquisition of English articles
09:30-10:00	Ji Hyun Kim (Columbia U., USA) Recasts in EFL classrooms: Teacher intention vs. learner interpretation
10:00-10:30	Eun-kyung Sung (Cyber U. of Foreign Studies) L2 speech perception and production by Korean adults and children
Chair: Jong-bai Hwang (Konkuk U.)	
14:00-14:30	Eun-Joo Lee (Ohio State U., USA) Book-reading formats and vocabulary learning: A case study of a young Korean learner of English
14:30-15:00	Sang-Ki Lee (U. of Hawaii, USA) Typological input enhancement and learner attention
15:00-15:30	Ock Mo An (Kyung Hee U., Korea) Linguistic analysis of complaint letters for tourism business

Paper Sessions

Paper Sessions

www.kate.or.kr

Day 1 • Section 2: Methodology

[Room 608]

Chair: Dong-Ho Kang (Seoul Nat'l U. of Technology)	
10:50-11:20	Lesley Anne Harbon (U. of Sydney, Australia) Innovating with "English Cafe" in a Korean college English context
11:20-11:50	Zhang Zhenai (Yanbian U., China) Three language programs from the perspective of English education based upon bilingualism
Chair: Haeng Jung (Honam U.)	
13:00-13:30	Xu Xiaoyu (Polytechnical U., China) Constructing learning autonomy inside e-classes
13:30-14:00	Rattanasriha Namrin (Princess Chulabhorn College's Loei School, Thailand) Implementing critical thinking to develop reading comprehension skills and to enhance living values for M4 students
14:00-14:30	Mikyong Kim (Monash U., Australia) Cultural changes and ELT in Korea
14:30-15:00	Rolf Allan Palmberg (Abo Akademi U., Finland) Operation MathLog: An Internet-based EFL maze for mathematical-logical learners
Chair: Jihyeon Jeon (Ewha Womans U.)	
15:20-15:50	Kittiya Mukdaprasert (Khon Kaen U., Thailand) Promoting English reading ability and morality through self-directed learning for blind students
15:50-16:20	Patareeya Wisajorn (Ubon Rajathane U., Thailand) Encouraging students to read more: A view from Thailand

Day 2 • Section 2: Methodology

[Room 608]

Chair: Seongwon Lee (Gyeongsang Nat'l U.)	
09:00-09:30	You-sun Chung (Korea U., Korea) Listening anxiety in English classroom for adult beginners: Based on the results of TOEIC L/C test
09:30-10:00	Meyng Ju Park (EEI International, Korea) Multiple intelligences and foreign language learning
10:00-10:30	Minjong Song (Sungkyul U., Korea) A proposal for "modified" practices of process-centered writing for freshman English courses in Korea
Chair: Byunggon Yang (Pusan Nat'l U.)	
14:00-14:30	Tunde Bajzat (U. of Miskolc, Hungary) The motivation for learning English as a foreign language at a summer language course in England and at another one in Hungary
14:30-15:00	Eunsil Chun (Ewha Womans U., Korea) Effects of text, task, and L2 reading ability on English reading comprehension
15:00-15:30	Singgih Widodo Limantoro (The Business English Study Program of Politeknik Ubaya, Indonesia) Teaching English with heart and hand

Day 1 • Section 3: Curriculum & Materials Development

[Room 210]

Chair: Jay Myoung Yu (Yonsei U.)	
10:50-11:20	Jungsu Moon & Nahee Kim (Hankuk U. of Foreign Studies, Korea) The effect of poetry in EFL writing and learners' journals
11:20-11:50	Lawrence White (Kookmin U., Korea) There's a lexis in my texts: Dr. Seuss as a rich source for adult learners
Chair: Hee-Jung Ihm (Seoul Nat'l U. of Education)	
13:00-13:30	Hyongil Kim (Daelim College, Korea) The need for reading target culture-embedded texts to overcome EFL reading
13:30-14:00	Jin-ok Hong (In-je U., Korea) The ideological nature of Korean deference as reflected in institutional discourse
14:00-14:30	Thomas Mach (Konan U., Japan) Effects of computer interactivity on vocabulary learning
14:30-15:00	Elizabeth Yin-ling LIN (Trinity College, Ireland) Addressing challenges in Taiwan's third-level English language education: Insights from the Common European Framework
Chair: Shinhye Kim (Keimyung U.)	
15:20-15:50	Seong-Woo Lee (Chonnam Nat'l U., Korea) Connectors in Korean and Australian university student writing
15:50-16:20	Mihwa Chung (Korea U., Korea) The effect of speed reading training

Day 2 • Section 3: Curriculum & Materials Development

[Room 210]

Chair: Jungmin Ko (Sungshin Women's U.)	
09:00-09:30	James M. Sims (Tunghai U., Taiwan) A task-based, student-centered university EFL program in Taiwan
09:30-10:00	James Kobes & Yong-Yae Park (Seoul Nat'l U., Korea) English for academic purposes at the graduate level: Curriculum development issues
10:00-10:30	Kyong-hyon Pyo (Dankook U., Korea) Faculty's complicated voice for curriculum development
Chair: Jeong-Won Lee (Chungnam Nat'l U.)	
14:00-14:30	Vicky Man (Hong Kong Baptist U., Hong Kong) Using a CALL approach in pronunciation teaching
14:30-15:00	Tae-Eun Kim (U. of Illinois, USA) Instructional methods for teaching writing in ESL contexts
15:00-15:30	Soo-Ok Kweon & Hae-Ri Kim (POSTECH, Korea) Integrating science fiction into English as a special purpose (ESP)

Day 1 • Section 4: Teacher Training

[Room 310]

Chair: Young-Cheol Kim (Gongju Nat'l U. of Education)	
10:50-11:20	Hohsung Choe (Hankuk U. of Foreign Studies, Korea) Korean EFL teachers' identity construction in the NS-NNS dichotomy
11:20-11:50	Steven K. Lee (Portland State U., USA) Teachers' perception of the efficacy of the Open Court program for English language learners
Chair: Yunkyong Cho (Pukyong Nat'l U.)	
13:00-13:30	Hoe Kyeong Kim (Cleveland State U., USA) Unheard voices: A case study of Korean ESL students
13:30-14:00	Eun Jeong Kim (Kyungpook Nat'l U., Korea) Collaborative reflection of college English instructors for better instruction
14:00-14:30	Douglas Paul Margolis (U. of Hawaii, USA) Attributes of oral error feedback
14:30-15:00	Younghwa Lee (Korea Baptist Theological U., Korea) How does a teacher's input impact the output of students?
Chair: Hoo-Dong Kang (Chinju Nat'l U. of Education)	
15:20-15:50	Haedong Kim (Hankuk U. of Foreign Studies, Korea) Teachers' opinions on criteria for ELT materials evaluation and development
15:50-16:20	Benjamin R. Duncan (Seoul Nat'l U., Korea) Creating EFL writing benchmarks

Day 2 • Section 4: Methodology

[Room 310]

Chair: David Shaffer (Chosun U.)	
09:00-09:30	Eng Lye Ooi (Penang Free School, Malaysia) Second language teaching: Methodologies & approaches - Sharing an experience at the Fall Teacher Institute, Honolulu, Hawaii
09:30-10:00	Jeong-Weon Song (Konkuk U., Korea) Speaking and writing practices on the Cyworld Internet site
10:00-10:30	Sung-Ae Kim (Pusan Nat'l U., Korea) A call for effective homework assignments
Chair: Haemoon Lee (Sungkyunkwan U.)	
14:00-14:30	David E. Shaffer (Chosun U., Korea) Teaching proverbs through metaphors
14:30-15:00	Young-Ok Jong (U. of Warwick, UK) Effective approaches to teaching English writing in South Korea
15:00-15:30	Hyunjin Lee (Int'l Graduate School of English, Korea) The effect of explicit and implicit teaching of L2 grammar on young Korean EFL learners

Day 1 • Section 5: Evaluation & Testing

[Room 613]

Chair: Beom Yoo (Chungbuk Nat'l U.)	
10:50-11:20	Jimin Kahng (EEI International, Korea) Needs analysis of 6-9th graders for an English writing camp: English writing proficiency and needs on English writing
11:20-11:50	Choonhwa Lee (Kookmin U., Korea) Students' evaluations of comprehension vs. production and teacher-fronted vs. student-student activities in the EFL classroom
Chair: Jeong-Weon Song (Konkuk U.)	
13:00-13:30	Yuh-Fang Chang (Nat'l Chung Hsing U., Taiwan) An inquiry into pragmatic data collection methods
13:30-14:00	Masumi Azuma (Kobe Geijutsu Koka U., Japan) Assessing/enhancing learners' metaphorical competence
14:00-14:30	Eunyoung Hong (SUNY at Albany, USA) Discourse-oriented ethnographic analysis of classroom talk: Language in the classroom and language of the classroom
14:30-15:00	Hyo-Jin Chang (Int'l Graduate School of English, Korea) Effectiveness of pronunciation training on suprasegmentals
Chair: Eunyoung Hong (SUNY at Albany)	
15:20-15:50	Maria Oh (Jeonju Nat'l U. of Education, Korea) An English keypal project to boost some college students' autonomy in English learning
15:50-16:20	Mungyun Byeon (Kwang Yang College, Korea) A study on English education departments' curricula in Korea

Day 2 • Section 5: Evaluation & Testing

[Room 410]

Chair: Hoyeol Ryu (Hankyong Nat'l U.)	
09:00-09:30	Aidan Hammond (Seoul Nat'l U., Korea) Developing ESL speaking benchmarks
09:30-10:00	Heffernan Neil Francis (Hiroshima Shudo U., Japan) TOEFL classroom success
10:00-10:30	Hyejeong Kim (Kyonggi Institute of Technology) & Dongil Shin (Chung Ang U., Korea) Aviation English assessment in practice: Task design and emerging insights
Chair: Sang-Ho Han (Gyeongju U.)	
14:00-14:30	Rachel LAI Sui-yee & Lilian LAW Lai-yi (Lingnan U., China) Paradigm shift in learning responsibilities: Transforming passive learners in autonomous language learning

Day1 • Section 6: Current Issues

[Room 614]

Chair: Yong-Yae Park (Seoul Nat'l U.)	
10:50-11:20	Chamnan Para (Mahasarakham U., Thailand) A corpus study of high-frequency words in civil engineering research articles: Subdisciplinary differences between structure and transportation
11:20-11:50	Mihyon Jeon & Jiyeon Lee (U. of Pennsylvania, USA) Learning from other countries: Policy analysis of inviting native-speaking English teachers in Asian countries
Chair: Rosa Jinyoung Shim (Open Cyber U.)	
13:00-13:30	Kyungsuk Kim (Kyonggi U., Korea) An analysis of references in the articles in <i>English Teaching</i>
13:30-14:00	Yuko Butler (U. of Pennsylvania, USA) Attitudes towards recreational reading in L1 and FL among elementary school students
14:00-14:30	Yunjoon Park (Hanyang U., Korea) Korean academic families' perceptions of bilingual/bicultural development in school age children: An exploration of the experiences of four families residing in the United States
14:30-15:00	Hyun Jung Yoo (Int'l Graduate School of English, Korea) Research trends in English education in Korea from 1996 to 2005: A content analysis of journal articles
Chair: Andrew Kim (Chonnam Nat'l U.)	
15:20-15:50	Shinwoong Lee (Hanyang U., Korea) Vocabulary size, year in college, and gender
15:50-16:20	Smyth Kevin James (Korea U., Korea) Productive and receptive vocabulary

Day1

[Room 410]

[Room 615]

	Chair: Beom Yoo (Chungbuk Nat'l U.)	Chair: Hyunoo Lee (Inha U.)
10:50-11:50	Robert J. Campbell (Boston U., USAa) Experiential learning principles and methodology	Sung Won Kang (English Mou Mou, Korea) A model for an effective self-directed English learning [Korean]
	Chair: Maria Oh (Jeonju Nat'l U. of Education)	Chair: Eun-Ju Kim (Ewha Womans U.)
13:00-14:00	Susan Mary Pryor (SBS English, Korea) A predictive approach to authentic conversation	Myung-chong Chung (Neungyule Education, Korea) The state-of-the-art search engine for Korean English learners: ET-Housea
14:00-15:00	Loudermilk Brandon Conner (U. of Texas, USA) Genre analysis instruction in the graduate ESL/EFL classroom	Hye-Jin Huh (EduKLC, Korea) Individualized level-based online program in blended learning environment
	Chair: Seongwoo Lee (Chonnam Nat'l U.)	Chair: Kyung-sook Paik (Hanyang Women's Col.)
15:20-16:20	Andrew Edward Finch (Kyungpook Nat'l U., Korea) Classroom-based assessment for EFL teachers in Korea	Kwary Deny Arnos (Airlangga U., Indonesia) Creating a technical vocabulary wordlist and web-based materials: The first step for teaching and learning ESP

Day2

[Room 615]

	Chair: Dong-kyoo Kim (Busan Nat'l U. of Education)	
09:00-10:00	Gerry Lassche (Miyagi Gakuin Women's U., Japan) Dealing with silence: Structuring for participation	
	Chair: Jeong-ryeol Kim (Korea Nat'l U. of Education)	
14:00-15:00	Yong-hun Lee (Chungnam Nat'l U., Korea) Analyzing English textbooks with corpus tools: A corpus linguistics approach to textbook analyses	

Poster Sessions

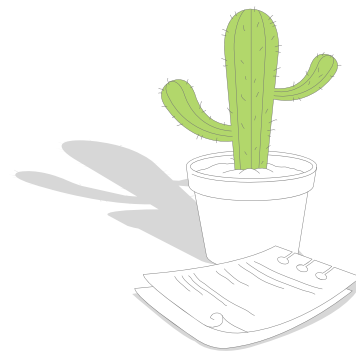
Day 1

Chair: Yong-Yae Park (Seoul Nat'l U.)

Friday, June 23
13:00-15:50

Hyun Jung Jean (Chung-Ang U., Korea)
English fluency through lexical chunking for 5 year-old children

Eun Chung (Korea U., Korea)
The multiple intelligences of Korean university students and implications for EFL instruction

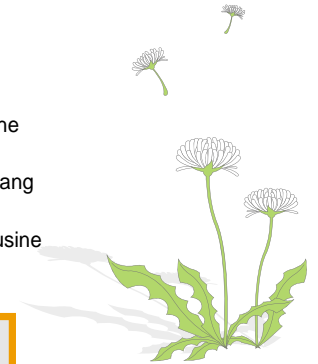
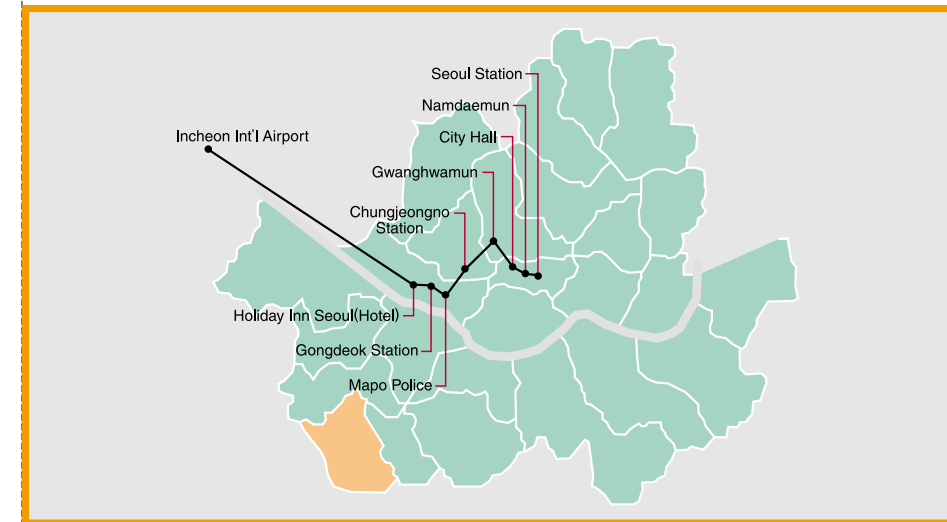


How to Reach the Conference Venue

The Incheon International Airport (IIA), in the city of Incheon, is the biggest and main international airport in Korea. The distance between the Airport and downtown Seoul is about 52 km. As taxi fares from Incheon International Airport to Hanyang University are fairly expensive, we recommend taking the limousine bus from the airport and transferring to the subway at City Hall.

By LIMOUSINE from Incheon International Airport

The limousine bus for City Hall leaves from bus stops 4A and 10A at Incheon International Airport. The bus costs 8,000 to 10,000 and runs every 15 minutes, from 04:55 to 21:00. Travel time to City Hall is approximately 70 minutes. You are advised to take subway line No. 2 (Green) from City Hall to Hanyang University (Hanyang Dae Hak Gyo Station), which is 8 stations away from City Hall. Travel time to Hanyang University from City Hall is approximately 15 minutes. For more information about the limousine bus, contact 02-2664-9898.



By TAXI from Incheon International Airport

By regular taxi, the fare to downtown Seoul in the vicinity of Hanyang University will be about 42,000 won (including toll). The exact fare will depend on traffic. Fares will also be 20 percent higher between midnight and 04:00. Deluxe taxis, offering more passenger space and higher standards of service, are also available at a cost of around 69,000 won to Hanyang University. Deluxe taxis have no late-night surcharge and may be called at 02-558-8000.

By SUBWAY of Metropolitan Seoul

Seoul subways are not directly connected to Incheon International Airport. In order to take the subway from the airport to Hanyang University, you must first take a limousine bus or a taxi to a nearby subway station. Please refer to the Seoul subway map available at all stations. Take subway line No. 2 (Green) and get off at the Hanyang University stop.

